



2024 / 2025

COLLECTIONS BOOK



Inspiration - Moodboards	4
Finish Technologies - LUXE	19
Solid - Neutral	20
Solid - Colorful	22
Woodgrain	24
Picasso Series	25
Abstract - Stone	26
Abstract - Metal, Stone, Textile	28
Pearl Effect	30
LUXE Global Collection	32
Finish Technologies - ZENIT	37
Solid - Neutral	38
Solid - Colorful	40
MetalDeco	42
Metal Plus	44
Nuvola, Abstract - Stone	46
ZENIT Global Collection	48
Finish Technologies - SYNCRON	55
Woodgrain and Abstract	56
SYNCRON Global Collection	84
Full Solutions	86
Sustainability	88
Technical Details	91
Availability Charts	92



13939



LIOHER®

13939

Office & Showroom



LIOHER offers high quality furniture components with the vision of becoming the most complete one-stop shop for professionals in the industry.

Since its founding in 2010, LIOHER has only strengthened its enticing offering of products and cabinetry solutions:

- Modern and technologically advanced in-stock finish collections, including LUXE high gloss, ZENIT supermatt and SYNCRON texture.
- A leading door production program using state-of-the-art machinery and PUR edgebanding technologies.
- A premium frameless cabinet box that's made to stand the test of time.
- Two cabinet programs that cover the breadth of your needs: Stock and Custom.
- A network of production and distribution facilities across the USA with stock processing machinery, logistics, and fully equipped showrooms all aimed to serve our professional clients.

Our mix of knowledge and experience has enabled us to build a cabinetry line that truly fulfills the needs of our customers. Over our years of operation, our mission has remained the same: to serve as your dedicated partner.

MOODBOARDS



Combining three distinct designs feels effortless and fresh in this nature-inspired space that utilizes warm, grounding woodgrain and stone patterns accented with sky blue.





Kitchen in Zenit Nuvola 3, Sincron Reeded Sky, and Picasso 2.

INSPIRATION



CAVA Shakers in Zenit Azul Indigo are the perfect transitional counter point to Luxe Rosales 3 in Flatte. Another elegant layer of contrast is added with CompactSlab countertops in Statuario Bianco.





Kitchen in Zenit Azul Marino and Luxe Rosales 3.



Bathroom in Zenit Cotto, Tierra Nosta, and Sincron Reeded Petal.

INSPIRATION



Welcoming, warm, and sophisticated, this bathroom creates bold harmony with Zenit Cotto and Tierra Nosta. Wall paneling accent in Syncron Reeded Petal.

INSPIRATION

Fresh and energizing, this heart of the home kitchen is a harmony of three distinct Synchron textures.





Kitchen in Synchron Siena, Reeded Petal, and Picasso 2.



Cabinetry in Zenit Blanco, Sincron Nocce 1, and Luxe Metallo 4.



INSPIRATION



Warm, contemporary style with a nod to a classic color palette. Zenit Blanco and Sincron Nocce 1 are enhanced by the depth and shine of Luxe Metallo 4.



Kitchen in Sincron Woodline 4 and Zenit Camel.

INSPIRATION



Sunny and sophisticated, this kitchen palette brings modern warmth with the golden tones. Balance can be achieved with the cool veining of Compact Slab countertops in Himalaya.

INSPIRATION



Beautiful contrast is created in this modern and sleek kitchen thanks to warm and rustic Synchron Lakeland 3 and Zenit Gris Plomo. CompactSlab countertops in Aetnas feature just the right amount of grey veining to artfully connect all the design elements.





Kitchen in Synchron Lakeland 3 with Zenit Gris Plomo.

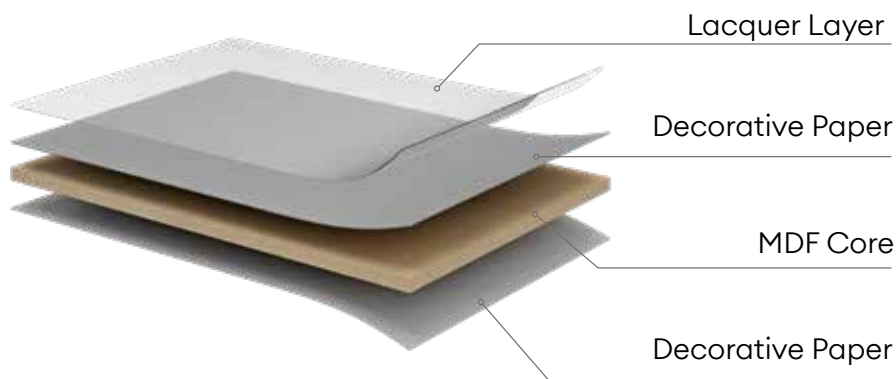


Luxe Azul Indigo featured in ALVIC Showroom “Hermosilla 77”, Madrid.



High Gloss with a Mirror Effect

The LUXE finish collection features luminous high gloss with a mirror effect and enhanced durability. A quality engineered core (MDF) serves as the substrate for pressed decorative paper impregnated with resins and additives that have been formulated to create the ultimate high gloss finish. A lacquer layer with UV treatment is applied last adding to the durability and surface quality.



High Scratch Resistance

Reliable performance and longevity in high traffic residential and commercial environments



Highly Reflective

LUXE technology offers extraordinary beauty with mirror-level reflectivity and shine



Stain Resistant

Designed for daily use, resistant to many types of food stains



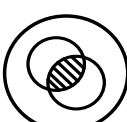
Antibacterial Treatment

Protective shield on the surface that prevents the spread of harmful microorganisms



Easy to Clean

Cleans easily with a microfiber cloth, soap, and water



Color Stability

Colors will maintain their tone over time and with exposure to indoor light and sunlight



Lasting Durability

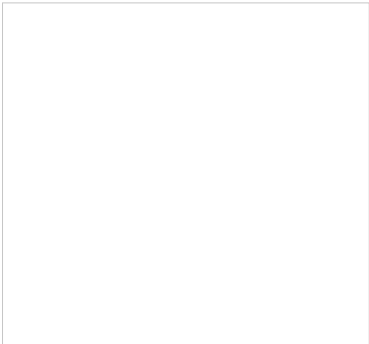
Quality and durable surface that will perform and last in high traffic environments



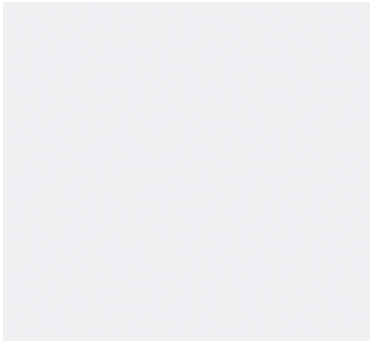
Ecologically Responsible

Products are made with certified raw materials from sustainable forestry practices

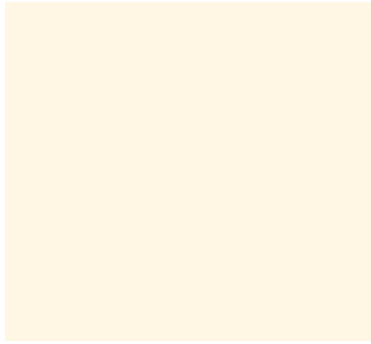
Solid - Neutral



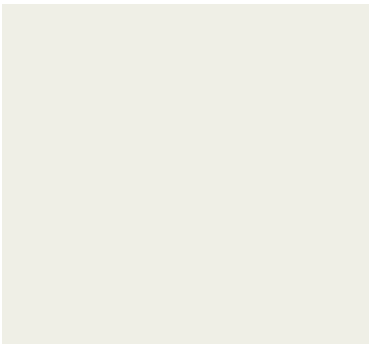
Blanco



Blanco Polar



Magnolia



Gris Perla



Gris Nube



Cashmere



Basalto



Gris Plomo



Antracita



Black



Gris Metallic



Will call
Panel & Edge



Flatte Slab
Door



Sequence
Doors



Finger-Pull
Door



Laminates



Kitchen in Luxe Blanco.

Solid - Colorful



Agua Marina



Verde Salvia



Azul Indigo



Azul Marino



Rojo



Cotto



Will call
Panel & Edge



Flatte Slab
Door



Sequence
Doors



Finger-Pull
Door



Laminates



Kitchen in Luxe Azul Marino.

Woodgrain



Olivo



Guayana



Rosales 3



Olmo



Frappe



Euroline 03



● Will call
Panel & Edge



● Flatte Slab
Door



● Sequence
Doors



● Finger-Pull
Door



● Laminates

NEW Picasso Series



Picasso 1



NEW



Picasso 2



NEW



Picasso 3



NEW



Will call
Panel & Edge



Flatte Slab
Door



Sequence
Doors



Finger-Pull
Door



Laminates

NEW Abstract - Stone



Nuvola 2



Nuvola 3



Bernini



● Will call
Panel & Edge



● Flatte Slab
Door



● Sequence
Doors



● Finger-Pull
Door



● Laminates



Kitchen in Luxe Nuvola 2 and Zenit Tortora.

Abstract - Metal, Stone, Textile



Metallo 1



Metallo 4



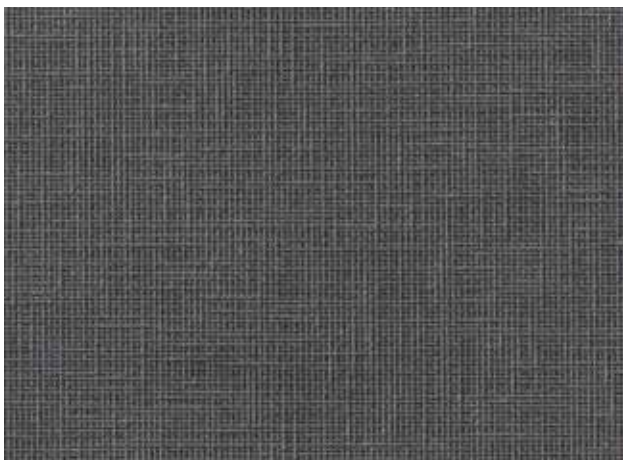
Porcelain 1



Cuzco Oro



Textil Plata



Textil Grafito



Will call
Panel & Edge



Flatte Slab
Door



Sequence
Doors



Finger-Pull
Door

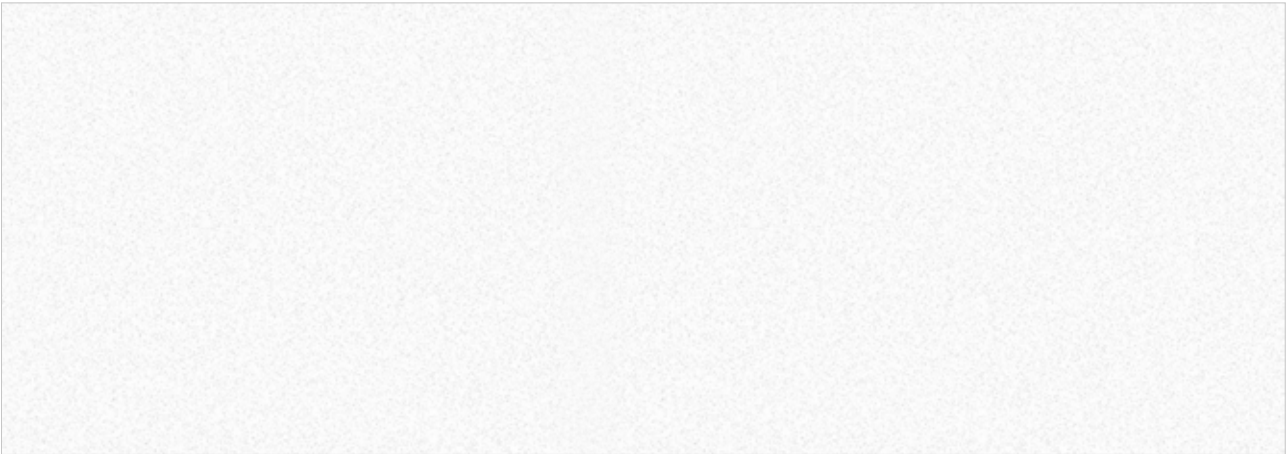


Laminates

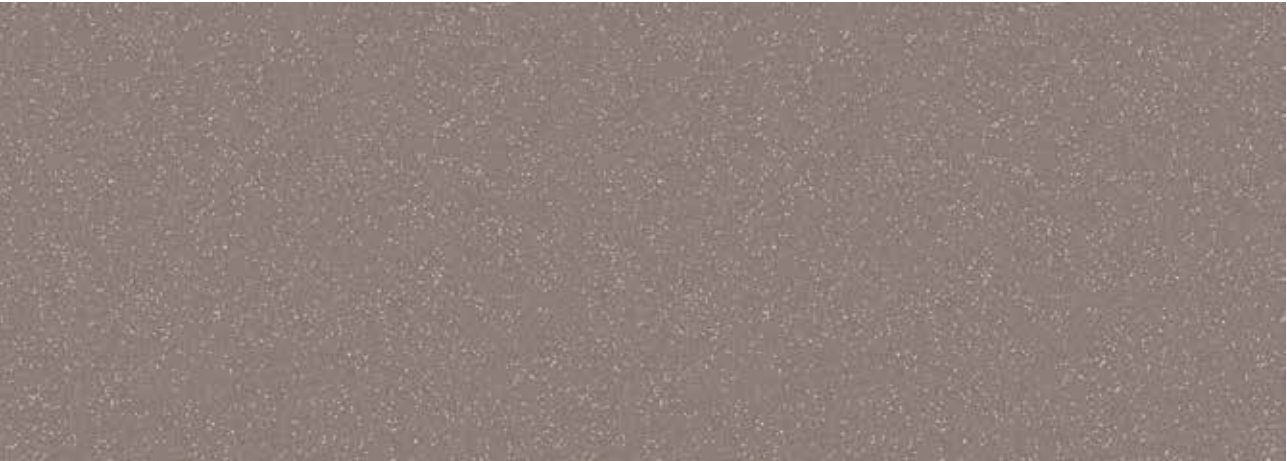


Wall cabinetry in Luxe Porcelain 1, 3 and Black.

Pearl Effect



Blanco Colonial PE



Basalto PE



Antracita PE



● Will call
Panel & Edge



● Flatte Slab
Door



● Sequence
Doors



● Finger-Pull
Door



● Laminates



Retail space in Luxe Blanco Colonial Pearl Effect and Black.



GLOBAL COLLECTION

Colors and designs that lead the trends and push the boundaries of what's next. Panels & edge available with minimum order quantity and extended lead time.

Luxe Nuvola 1.

Stratos

The elegance and timelessness of stone meets a modern and versatile color palette.



Luxe[®]
by ALNIC



Siena SM



Nuvola 1



Tierra Nosta



Verde Nosta

Porcelain

The classic elegance of Porcelain with vibrant veining.

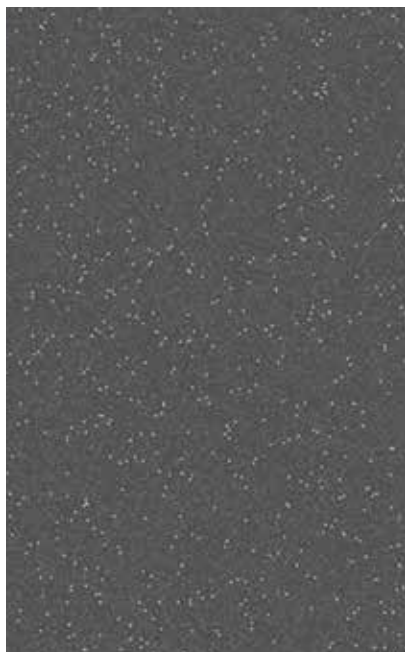


Porcelain 2

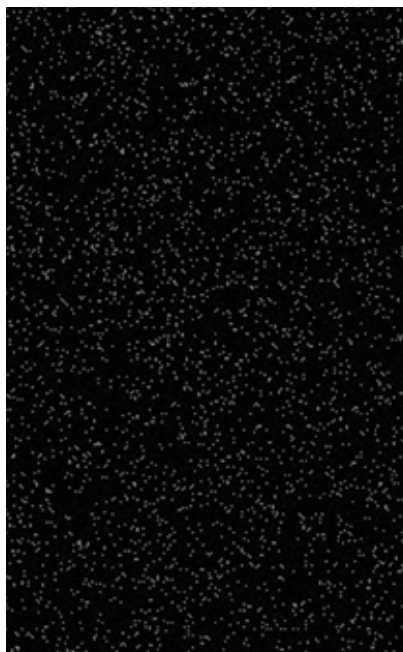


Porcelain 3

Pearl Effect



Gris Plomo Pearl Effect



Black Pearl Effect

Solid



Burdeos



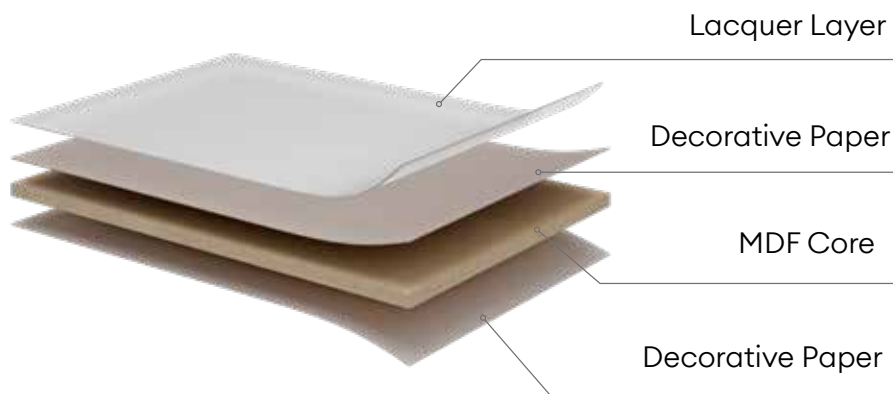
Hotel Lelystad room in Luxe Porcelain 2, designed by ME Design & Interior.



Kitchen in Zenit Azul Marino and Blanco.

Supermatt finish with Silk Touch

The ZENIT finish collection features a lacquered, velvety-soft, supermatt surface. A quality engineered core (MDF) serves as the substrate for pressed decorative paper impregnated with resins and additives that have been formulated to create the silky and ultra-low sheen finish. A lacquer layer with UV treatment is applied last adding to the durability and surface quality, which includes high resistance to scratches and abrasion.



Stain Resistant

Designed for daily use, resistant to many types of food stains



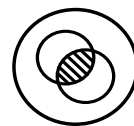
Anti-Fingerprint

Anti-fingerprint properties



Easy to Clean

Cleans easily with a microfiber cloth, soap, and water



Color Stability

Colors will maintain their tone over time and with exposure to indoor light and sunlight



Lasting Durability

Quality and durable surface that will perform and last in high traffic environments



Ecologically Responsible

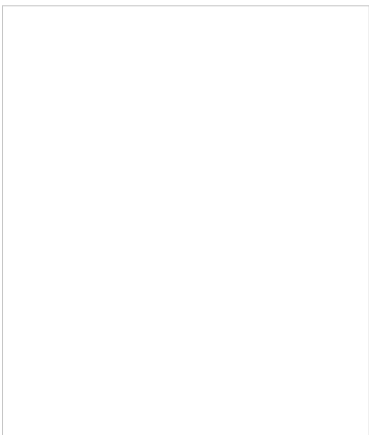
Products are made with certified raw materials from sustainable forestry practices



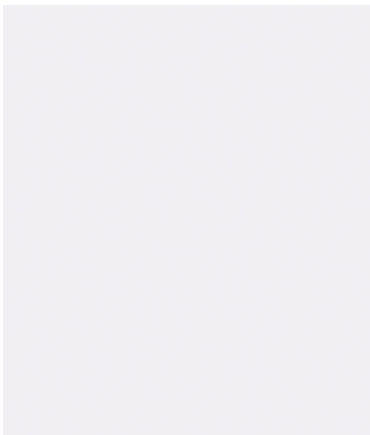
Silk Touch

Velvety-soft and ultra-low sheen surface

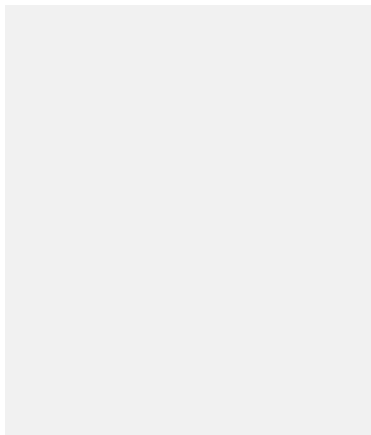
Solid - Neutral



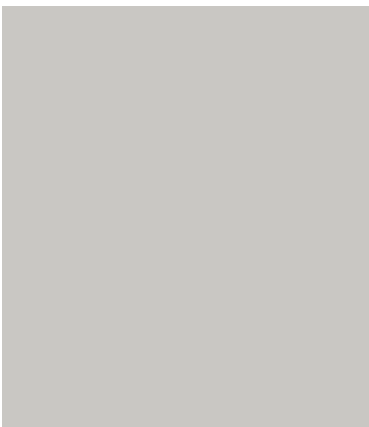
Blanco SM



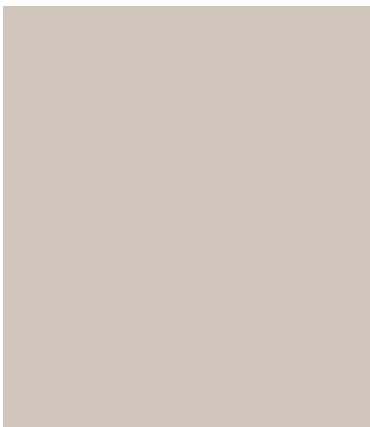
Blanco Polar SM



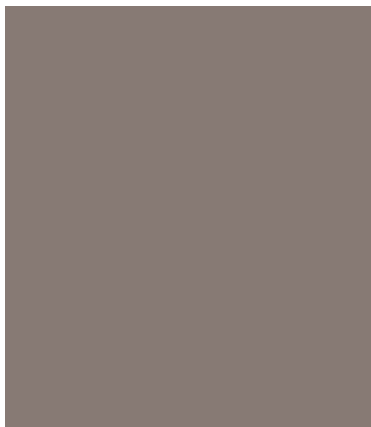
Gris Perla SM



Gris Nube SM



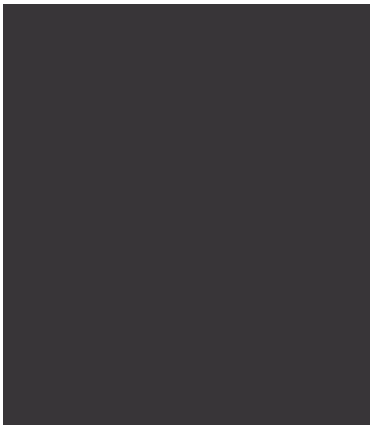
Cashmere SM



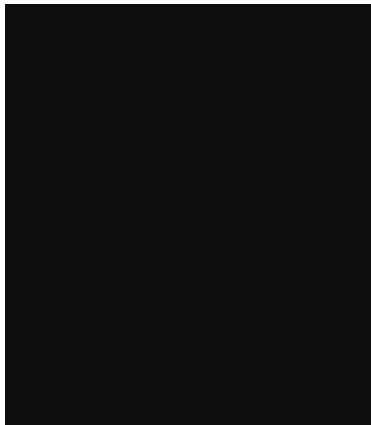
Basalto SM



Gris Plomo SM



Antracita SM



Black SM



Will call
Panel & Edge



Flatte Slab
Door



Finger-Pull
Door



CAVA 5-Piece
Shaker



Laminates



Kitchen in Zenit Basalto and Synchron Rosales 2.

Solid - Colorful



Kitchen in Zenit Agave and Synchron Como Ash 2.



Agave SM





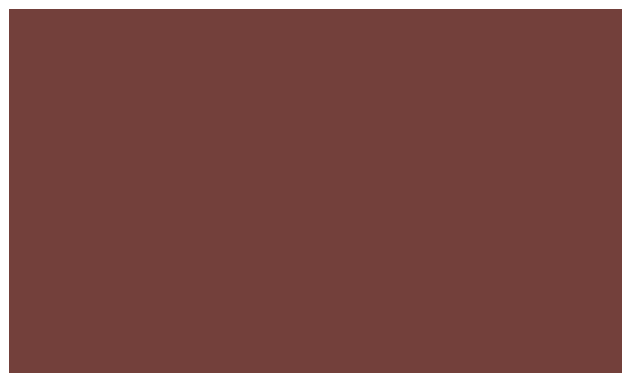
Camel SM



Cotto SM



Tortora SM



Almagra SM



Azul Índigo SM



Azul Marino SM



Agua Marina SM



Verde Salvia SM



● Will call
Panel & Edge



● Flatte Slab
Door



● Finger-Pull
Door

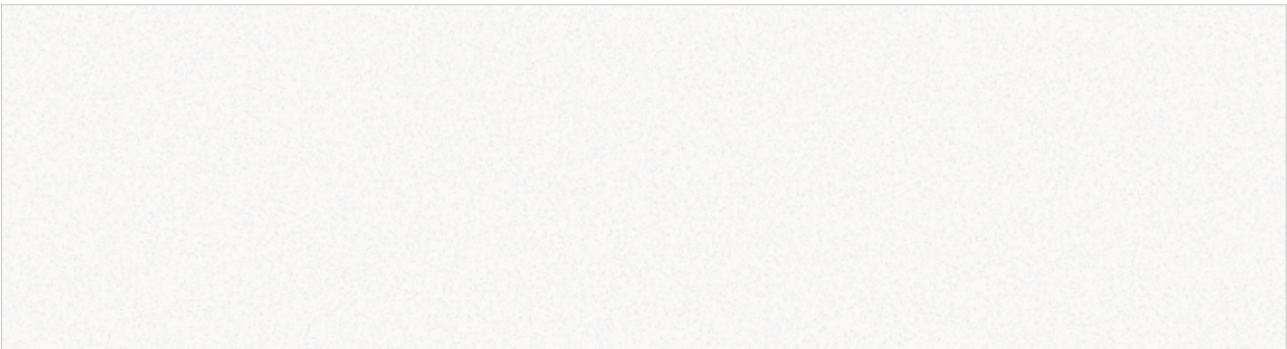


● CAVA 5-Piece
Shaker



● Laminates

MetalDeco



Blanco MetalDeco



Basalto MetalDeco



Antracita MetalDeco



Black MetalDeco



● Will call
Panel & Edge



● Flatte Slab
Door



● Finger-Pull
Door



● CAVA 5-Piece
Shaker



● Laminates



Kitchen in Zenit Blanco MetalDeco.

NEW Metal Plus

Featuring real metal in the decor, the new Metal Plus in-stock collection takes luxury supermatt designs to a new level. Metal Plus colors balance the intriguing allure of metal with our silky-soft Zenit finish for a design element that sets spaces apart.



Metal Plus Light Gold



Metal Plus Titanio



Will call
Panel & Edge



Flatte Slab
Door



Finger-Pull
Door



CAVA 5-Piece
Shaker



Laminates



High Product Quality
AWARD

Zenit
High Resistance Surface



Kitchen in Zenit Light Gold Metal Plus and Synchron Rosales 1.

NEW Nuvola, Abstract - Stone



Titan 1



Nuvola 2



Nuvola 3



Will call
Panel & Edge



Flatte Slab
Door



Sequence
Doors



Finger-Pull
Door



CAVA 5-Piece
Shaker



Laminates



Bath Vanity in Zenit Nuvola 3 Synchron Reeded Sky.



GLOBAL COLLECTION

Colors and designs that lead the trends and push the boundaries of what's next. Panels & edge available with minimum order quantity and extended lead time.

Room in Zenit Verde Nosta and Synchron Woodline 4.

Stratos

The elegance and timelessness of stone meets a modern and versatile color palette.



Zenit
High Resistance Surface



Siena SM



Nuvola 1



Tierra Nosta



Verde Nosta



Closet in Zenit Cashmere MetalDeco.



Zenit
High Resistance Surface

MetalDeco

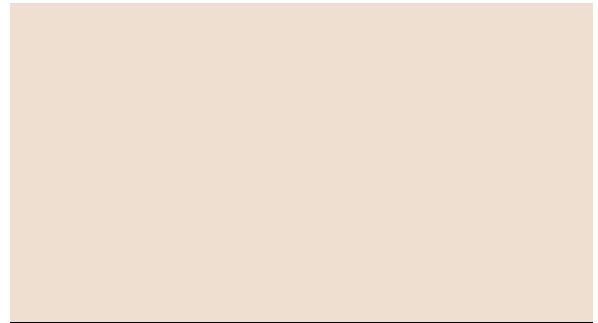


Cashmere MetalDeco



Gris Nube MetalDeco

Solid



Arena



Burdeos

Porcelain



Porcelain 1



Porcelain 2



Porcelain 3



Kitchen in Zenit Copper Metal Plus, designed by Rome Signature.

Metal Plus



Zenit
High Resistance Surface

Featuring real metal in the decor, the new Metal Plus in-stock collection takes luxury supermatt designs to a new level. Metal Plus colors balance the intriguing allure of metal with our silky-soft Zenit finish for a design element that sets spaces apart.



Copper Metal Plus



Champagne Metal Plus



Kitchen in Synchron Rosales 3.

Experience Tactile Texture

The SYNCRON finish collection features highly decorative and textured surfaces in an attractive range of designs that recreate wood, stone, textiles and other abstract patterns. A quality engineered core (particleboard) serves as the substrate for pressed decorative paper impregnated with resins and additives that have been formulated to create very realistic visual and tactile textured details.



* Depends on the design



Highly Decorative

The beauty of natural patterns and textures for wide appeal and numerous applications



Stain Resistant

Designed for daily use, resistant to many types of food stains



Easy to Clean

Cleans easily with a microfiber cloth, soap, and water



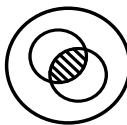
Lasting Durability

Quality and durable surface that will perform and last in high traffic environments



Antibacterial Treatment

Protective shield on the surface that prevents the spread of harmful microorganisms



Color Stability

Colors will maintain their tone over time and with exposure to indoor light and sunlight



Ecologically Responsible

Products are made with certified raw materials from sustainable forestry practices

NEW Picasso



Picasso 1  **NEW**



Picasso 2  **NEW**



Picasso 3  **NEW**



Will call
Panel & Edge



Flatte Slab
Door



Sequence
Doors



Finger-Pull
Door



CAVA 5-Piece
Shaker



Laminates



Kitchen in Syncron Picasso 1, Reeded Sky, and Zenit Gris Perla.

NEW Nogal Rosales



Rosales 1



Rosales 2



Rosales 3



Will call
Panel & Edge



Flatte Slab
Door



Sequence
Doors



Finger-Pull
Door



CAVA 5-Piece
Shaker



Laminates



Kitchen in Syncron Rosales 3.

Nocce



Nocce 1



Nocce 3



Nocce 2



Will call
Panel & Edge



Flatte Slab
Door



Sequence
Doors



Finger-Pull
Door



CAVA 5-Piece
Shaker



Laminates



Kitchen in Syncron Nocce 01 and Zénit Verde Salvia SM, designed by The Kitchen Company.

Como Ash



Como Ash 1



Como Ash 2



Como Ash 3



Will call
Panel & Edge



Flatte Slab
Door



Sequence
Doors



Finger-Pull
Door



CAVA 5-Piece
Shaker



Laminates



Kitchen in Como Ash 1.

Woodline



Woodline 1



Woodline 3



Woodline 4



NEW



Will call
Panel & Edge



Flatte Slab
Door



Sequence
Doors



Finger-Pull
Door



CAVA 5-Piece
Shaker



Laminates



Furniture in Syncron Woodline 1 and Woodline 3.

Lakeland Oak



Kitchen in Synchron Lakeland 3 and Zenit Black, designed by The Kitchen Company.



Lakeland Oak 1



Lakeland Oak 3



Lakeland Oak 2



● Will call
Panel & Edge



● Flatte Slab
Door



● Sequence
Doors



● Finger-Pull
Door



● CAVA 5-Piece
Shaker



● Laminates

Ida



Ida 1



Ida 2



Ida 3



Ida 4



Will call
Panel & Edge



Flatte Slab
Door



Sequence
Doors



Finger-Pull
Door



CAVA 5-Piece
Shaker



Laminates



Decorative panels in Syncron Ida 1.

Olmo



Living Room in Sincron Olmo 3, designed by Ruiz-Velázquez.



Olmo 2



Olmo 3



Will call
Panel & Edge



Flatte Slab
Door



Sequence
Doors



Finger-Pull
Door



CAVA 5-Piece
Shaker



Laminates

Anniversary Oak




Anniversary Oak 2



Anniversary Oak 3



Closet in Synchron Anniversary Oak 3 and Zenit Blanco.

- Will call Panel & Edge
- Flatte Slab Door
- Sequence Doors
- Finger-Pull Door
- CAVA 5-Piece Shaker
- Laminates

Muratti



Muratti 4



Muratti 1



Muratti 2



Muratti 3



Will call
Panel & Edge



Flatte Slab
Door



Sequence
Doors



Finger-Pull
Door



CAVA 5-Piece
Shaker



Laminates

Frappe



Frappe 1



Frappe 2



Frappe 3



Will call
Panel & Edge



Flatte Slab
Door



Sequence
Doors



Finger-Pull
Door



CAVA 5-Piece
Shaker



Laminates

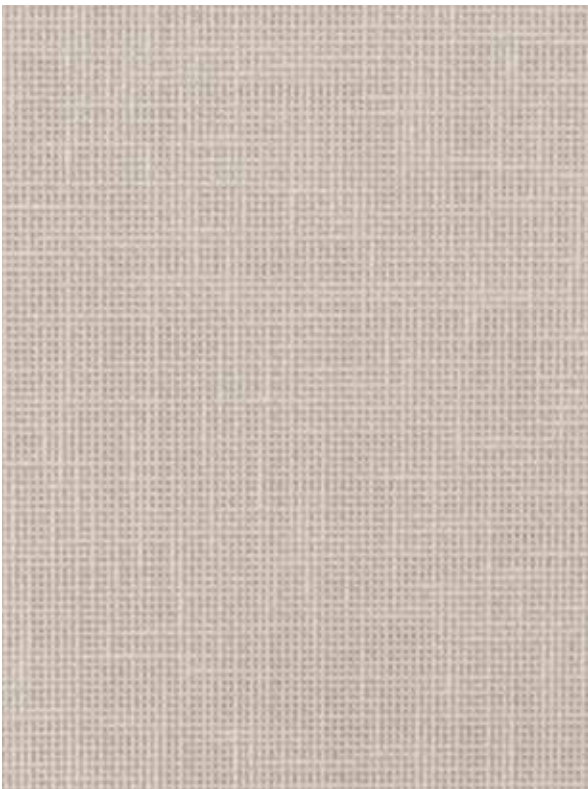
Abstracts - Metal, Stone, Textil



Brushed Concrete 1



Brushed Concrete 2



Textil Plata



Evora 4



Will call
Panel & Edge



Flatte Slab
Door



Sequence
Doors



Finger-Pull
Door



CAVA 5-Piece
Shaker



Laminates

Ice



Ice 1



Ice 4





Kitchen in Syncron Ice 1 and Syncron Ice 4.

Natural Wood



Blanco Natural Wood



Cashmere Natural Wood



Gris Plomo Natural Wood



Antracita Natural Wood



Will call
Panel & Edge



Flatte Slab
Door



Sequence
Doors



Finger-Pull
Door




CAVA 5-Piece
Shaker




Laminates

NEW Pastels



Petal Natural Wood  **NEW**




Sky Natural Wood  **NEW**



Agave Natural Wood  **NEW**



 Will call
Panel & Edge



 Flatte Slab
Door



 Sequence
Doors



 Finger-Pull
Door



 CAVA 5-Piece
Shaker



 Laminates

NEW Reeded

Linear texture creates an elegant, tactile pattern enhanced by delicate cross-grain ticking. *Grain runs horizontally the length of each panel.*

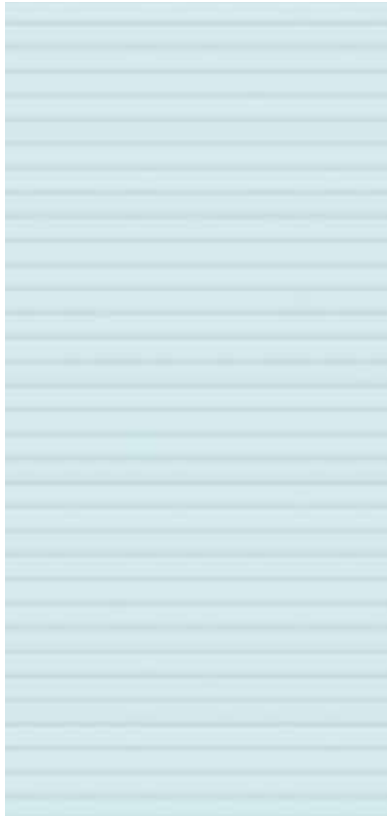


Kitchen in Synchron Reeded Sky, Picasso 2, and Zenit Nuvola 3.

NEW Reeded



Reeded Petal



Reeded Sky



Reeded Agave



● Will call
Panel & Edge



● Flatte Slab
Door



● Sequence
Doors



● Finger-Pull
Door



● CAVA 5-Piece
Shaker



● Laminates

NEW Abstract - Stone

The elegance and timelessness of stone looks are enhanced by deep, tactile texture for a very authentic feel.



Bernini



Siena



Verde Nosta



Tierra Nosta



Will call
Panel & Edge



Flatte Slab
Door



Sequence
Doors



Finger-Pull
Door



CAVA 5-Piece
Shaker



Laminates



Commercial Space in Syncron Verde Nosta and Agave Natural Wood.



GLOBAL COLLECTION

Colors and designs that lead the trends and push the boundaries of what's next. Panels & edge available with minimum order quantity and extended lead time.

Floating drawers in Titanio Cross Metal.

Cross Metal



Sincron®
structured panel LINE



Light Gold Cross Metal



Copper Cross Metal

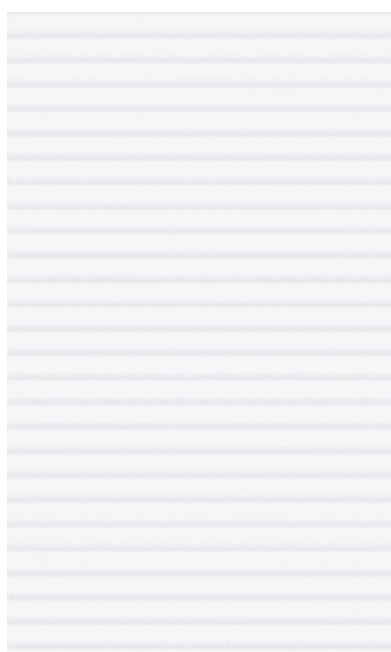


Titanio Cross Metal

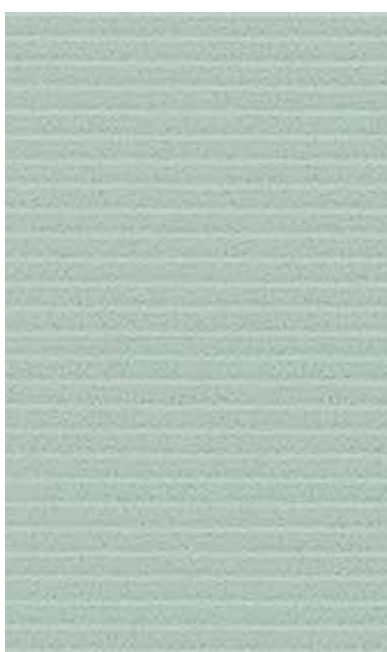


Champagne Cross Metal

Reeded

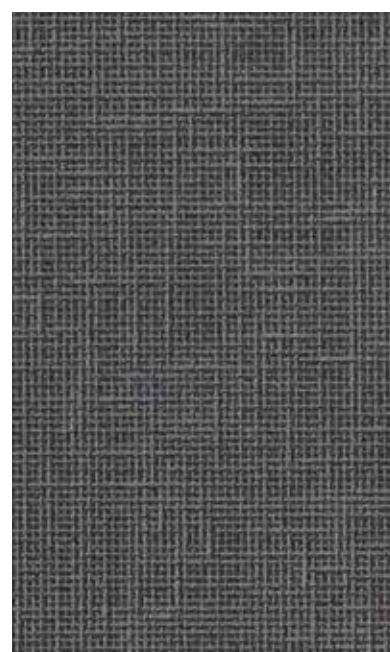


Reeded Blanco Polar



Reeded Mint

Textil



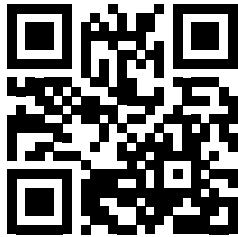
Textil Grafito

Your Trusted Partner for Full of Solutions

The LIOHER formula is to offer the best range of products and services for our professional clients, to earn their trust by fulfilling our promises, and to inspire with innovative and exciting offerings.

Our wide catalog of designs has been created with a Collections mentality assuring a great variety of possible combinations to allow you to become inspired and create.

The LIOHER Centers, with design-centric showrooms, local stock, delivery services and much more, are here to serve you and add value to your projects and client experiences.



Shop samples online!

Finger-Pull
Integrated handle

FINGER-PULL
integrated j-pull

CAVA[®]
by LIOHER

CAVA
5-Piece Shaker



flatte **F**
by LOHAR



FLATTE
Slab

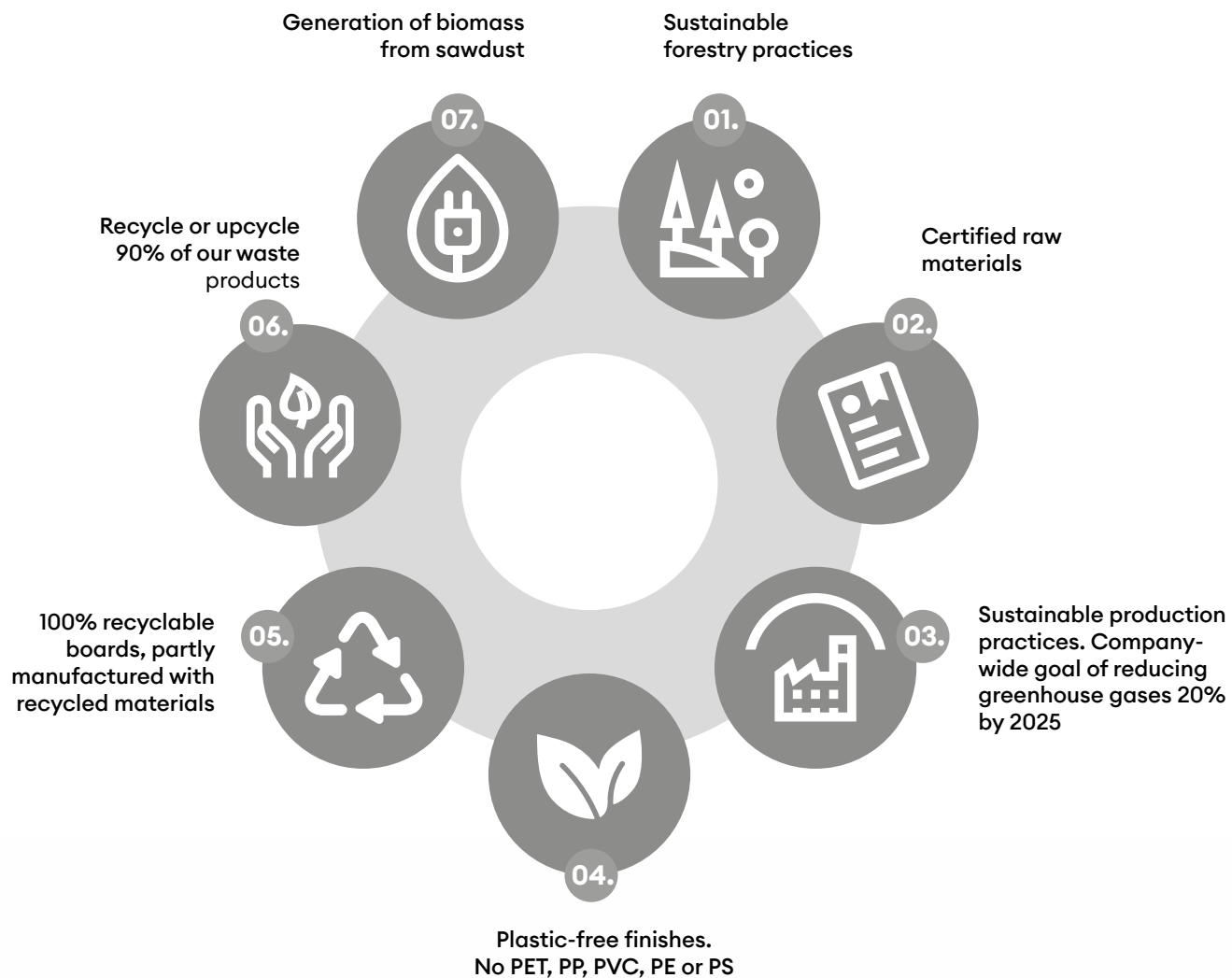
Panel Standard: 48" wide x 108" long x 18 mm thick with matching edgebanding available.

Sustainable Panels and Furniture Components

From start to finish, our business, products, and vision are all centered on sustainability. The boards (product core) we use are composed of wood fiber or particles that come from certified forest stewardship processes as well as recycled materials. Our processes of continuous improvement have also made our products maintenance-free and resistant to wear over time, increasing their lifecycle and reducing the waste of replacing, maintaining, and rebuilding.





















*Learn more about our
sustainability practices and
initiatives online!*





Kitchen in Synchron Como Ash 2.

Technical Details

		Luxe [®] by ALNIG	Zenit High Resistance Surface	Syncron [®] structured panel LINE	Standard
	Easy to Clean	•	•	•	
	Lasting Durability	•	•	•	
	Antibacterial Treatment	•		•	ASTM E2180 JIS Z2801
	High Scratch Resistance	•	•	•	EN-15186-A
	High Abrasion Resistance	•	•		EN-14323
	Stain Resistance	•	•	•	EN-14323
	Color Stability	•	•	•	EN-14323
	Environmentally Friendly	•	•	•	
	Silk-Touch		•		
	Anti-Fingerprint		•		
	Nature-Inspired			•	
	Mirror-Sheen High Gloss, level 101 GU	•			ISO-2813
	High Reflected Image	•			ASTM D5767
	Fire Rating	•	•	•	ASTM E84
	Impact Resistance	•	•	•	EN-14323:04
	Dry heat			•	EN-12722:09
	Water steam resistance			•	EN-14323:0
	Moist heat			•	EN-12721:09

	In-Stock	Panel & Edge	Flatte Slab	NEW Laminate	Finger-Pull	Global Collection (non-stock - panels and edge only)
AGUA MARINA	•	•	•			
ANTRACITA	•	•	•	•	•	
AZUL ÍNDIGO	•	•	•	•		
AZUL MARINO	•	•	•	•		
BASALTO	•	•	•	•		
NEW BERNINI	•	•	•			
BLACK	•	•	•	•		
BLANCO	•	•	•	•	•	
BLANCO POLAR	•	•	•	•		
CASHMERE	•	•	•	•		
COTTO	•	•	•			
CUZCO ORO	•	•	•			
EUROLINE 03	•	•	•			
FRAPPE	•	•	•			
GRIS METALLIC	•	•	•			
GRIS NUBE	•	•	•	•		
GRIS PERLA	•	•	•	•		
GRIS PLOMO	•	•	•	•		
GUAYANA	•	•	•			
MAGNOLIA	•	•	•			
METALLO 1	•	•	•			
METALLO 4	•	•	•			
NUVOLA 1						•
NEW NUVOLA 2	•	•	•			
NEW NUVOLA 3	•	•	•			
OLIVO	•	•	•			
OLMO	•	•	•			
NEW PICASSO 1	•	•	•			
NEW PICASSO 2	•	•	•			
NEW PICASSO 3	•	•	•			
PORCELAIN 1	•	•	•			
PORCELAIN 2						•
PORCELAIN 3						•
ROJO	•	•	•			
ROSALES 3	•	•	•			
SIENA						•
TIERRA NOSTA						•
TEXTIL GRAFITO	•	•	•			
TEXTIL PLATA	•	•	•			
VERDE NOSTA						•
VERDE SALVIA	•	•	•			

	In-Stock	Panel & Edge	Flatte Slab	NEW Laminate	Finger-Pull	Global Collection (non-stock - panels and edge only)
LUXE PEARL EFFECT						
ANTRACITA PE	●	●	●			
BLACK PE						●
BLANCO COLONIAL PE	●	●	●			
BASALTO PE	●	●	●			
GRIS PLOMO PE						●
BURDEOS PE						●



Kitchen in Luxe Cotto.

	In-Stock	Panel & Edge	Flatte Slab	NEW Laminate	Finger-Pull	CAVA 5PC Shaker	Global Collection (non-stock - panels and edge only)
NEW AGAVE SM	•	•	•			•	
AGUA MARINA SM	•	•	•				
ALMAGRA SM	•	•	•				
ANTRACITA SM	•	•	•	•	•	•	
ARENA SM							•
AZUL ÍNDIGO SM	•	•	•	•			
AZUL MARINO SM	•	•	•	•		•	
BASALTO SM	•	•	•	•			
BLACK SM	•	•	•	•	•		
BLANCO SM	•	•	•	•	•	•	
BLANCO POLAR SM	•	•	•	•	•		
BURDEOS SM							•
CAMEL SM	•	•	•				
CASHMERE SM	•	•	•	•		•	
COTTO SM	•	•	•				
GRIS NUBE SM	•	•	•	•			
GRIS PERLA SM	•	•	•	•			
GRIS PLOMO SM	•	•	•	•			
NUVOLA 1 SM							•
NEW NUVOLA 2 SM	•	•	•				
NEW NUVOLA 3 SM	•	•	•				
PORCELAIN 1 SM							•
PORCELAIN 2 SM							•
PORCELAIN 3 SM							•
SIENA SM							•
TIERRA NOSTA SM							•
TITÁN 1 SM	•	•	•				
TORTORA SM	•	•	•				
VERDE NOSTA SM							•
VERDE SALVIA SM	•	•	•				
ZENIT METALDECO							
ANTRACITA MD	•	•	•				
BASALTO MD	•	•	•				
BLACK MD	•	•	•				
BLANCO MD	•	•	•				
CASHMERE MD							•
GRIS NUBE MD							•
ZENIT METAL PLUS							
CHAMPAGNE							•
COPPER							•
NEW LIGHT GOLD	•	•	•				
NEW TITANIO	•	•	•				
ROJO	•	•	•				



Kitchen iin Zenit Almagra.

	In-Stock	Panel & Edge	Flatte Slab	NEW Laminate	Finger-Pull	CAVA 5PC Shaker	Global Collection (non-stock - panels and edge only)
NEW AGAVE NATURAL WOOD	•	•	•				
ANNIVERSARY OAK 2	•	•	•	•			
ANNIVERSARY OAK 3	•	•	•	•			
ANTRACITA NATURAL WOOD	•	•	•	•			
BLANCO NATURAL WOOD	•	•	•	•			
NEW BERNINI	•	•	•				
CASHMERE NATURAL WOOD	•	•	•				
CHAMPAGNE CROSS METAL							•
COPPER CROSS METAL							•
COMO ASH 1	•	•	•	•	•	•	
COMO ASH 2	•	•	•	•	•	•	
COMO ASH 3	•	•	•	•			
ÉVORA 4	•	•	•	•			
FRAPPE 1	•	•	•	•		•	
FRAPPE 2	•	•	•	•			
FRAPPE 3	•	•	•	•			
GRIS PLOMO NATURAL WOOD	•	•	•				
ICE 1	•	•	•	•			
ICE 4	•	•	•	•			
IDA 1	•	•	•	•		•	
IDA 2	•	•	•	•			
IDA 3	•	•	•	•			
IDA 4	•	•	•	•			
LAKELAND 1	•	•	•	•			
LAKELAND 2	•	•	•				
LAKELAND 3	•	•	•	•			
LIGHT GOLD CROSS METAL							•
MURATTI 1	•	•	•	•	•		
MURATTI 2	•	•	•	•			
MURATTI 3	•	•	•	•			
MURATTI 4	•	•	•	•	•	•	
NOCCE 1	•	•	•	•	•	•	
NOCCE 2	•	•	•	•			
NOCCE 3	•	•	•	•	•	•	
OLMO 2	•	•	•	•		•	
OLMO 3	•	•	•	•		•	
NEW BRUSHED CONCRETE 1	•	•	•	•			
NEW BRUSHED CONCRETE 2	•	•	•	•			
NEW PETAL NATURAL WOOD	•	•	•				
NEW PICASSO 1	•	•	•	•		•	
NEW PICASSO 2	•	•	•	•		•	
NEW PICASSO 3	•	•	•	•		•	
NEW REEDED AGAVE	•	•	•				
REEDED BLANCO POLAR							•

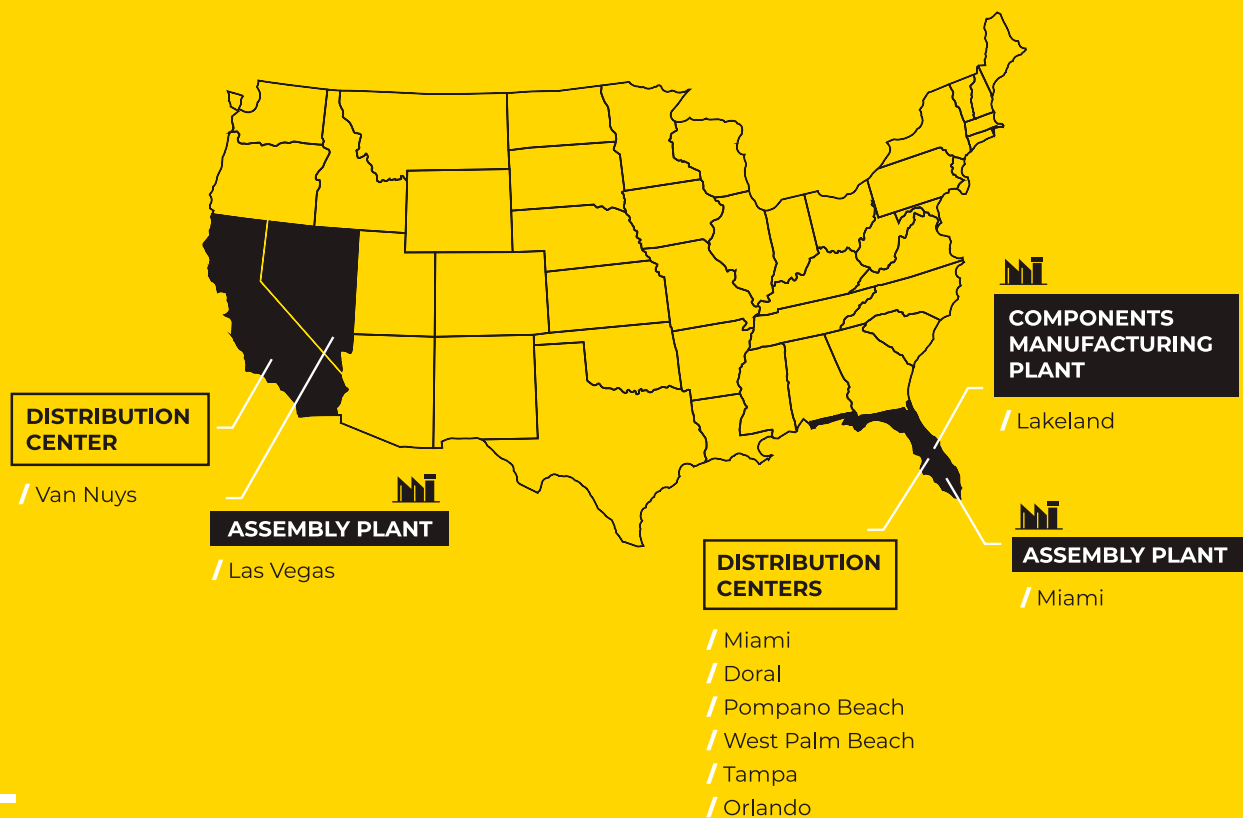
	In-Stock	Panel & Edge	Flatte Slab	NEW Laminate	Finger-Pull	CAVA 5PC Shaker	Global Collection (non-stock - panels and edge only)
REEDED MINT							●
NEW REEDED PETAL	●	●	●				
NEW REEDED SKY	●	●	●				
NEW ROSALES 1	●	●	●	●		●	
NEW ROSALES 2	●	●	●	●	●	●	
NEW ROSALES 3	●	●	●	●	●	●	
NEW SIENA	●	●	●				
NEW SKY NATURAL WOOD	●	●	●				
TEXTIL GRAFITO							●
NEW TEXTIL PLATA	●	●	●	●			
NEW TIERRA NOSTA	●	●	●				
TITANIO CROSS METAL							●
NEW VERDE NOSTA	●	●	●				
WOODLINE 1	●	●	●	●	●	●	
WOODLINE 3	●	●	●		●	●	
NEW WOODLINE 4	●	●	●	●			



Closet in Sincron Petal Natural Wood.



LIOHER®



Components Manufacturing Plant: 330.000 Sft

Assembly Plants: 100.000 Sft

Distribution Centers: 120.000 Sft

NEED SAMPLES?



@a3com.es

www.lioher.com

 @lioherusa